

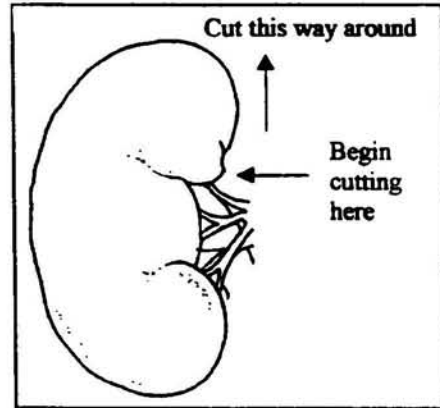
Kidney Dissection Sheet



Aim: This lesson is an experiment to dissect and draw a kidney.

Method and Results:

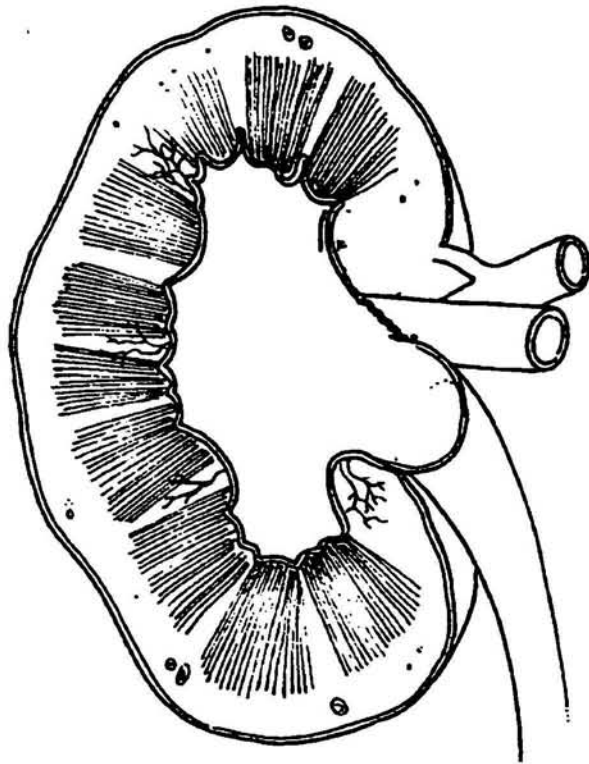
1. Place the kidney on its side in the tray.
2. Look for tubes coming out of it.
3. Pick up the scalpel.
4. Cut the kidney in half by cutting from the tubes and around.
(see Figure opposite)



5. You should end up with something like this:

6. Colour in this diagram the same colours as you can see in your kidney.

7. Label the parts of the kidney.



Conclusion

Answer the following questions:

1. What tubes could you see coming out of the kidney?

2. What was the dark red part of the kidney called?

3. Where does the ureter tube go to?